

Timely diagnosis and treatment is key to your health!

You can start the treatment, if necessary!

You can lead a healthy life!

Contribute and cooperate to prevent new TB and HIV infections!



**IOM Development Fund**  
DEVELOPING CAPACITIES IN MIGRATION MANAGEMENT



MINISTRY OF LABOUR,  
HEALTH AND SOCIAL  
AFFAIRS OF GEORGIA



International Organization for Migration (IOM)  
The UN Migration Agency



Migration and population mobility increase the risk of infectious diseases.

Early diagnostics are crucially important for timely detection and treatment.

**BE AWARE OF YOUR HEALTH STATUS – TAKE A FREE RAPID TEST FOR HIV AND SCREENING FOR TUBERCULOSIS.**



### WHAT SHOULD WE KNOW ABOUT TUBERCULOSIS?

Tuberculosis is an airborne infectious disease mainly affecting lungs. Sometimes it affects other organs, too.

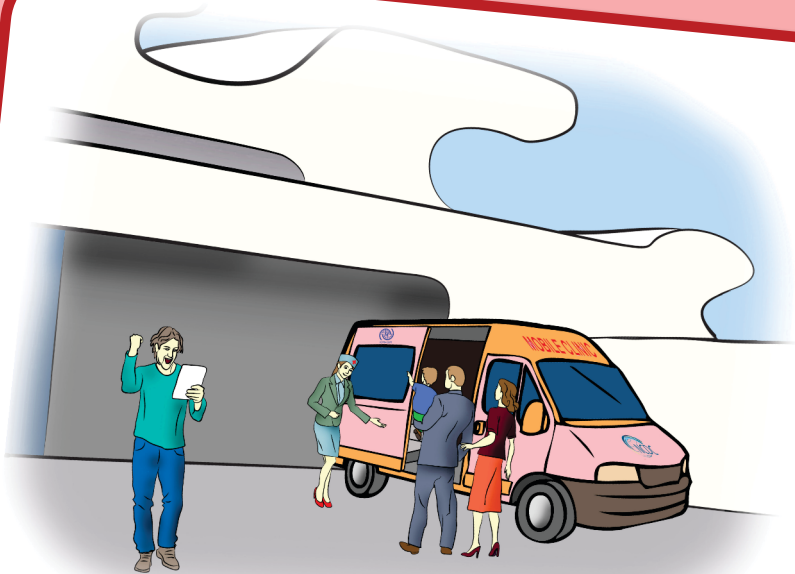
- Tuberculosis is spread when a person having an infectious form of the disease is coughing, sneezing or talking.

- The risk of tuberculosis increases where a person having an infectious form of the disease is in crowded places and unventilated buildings.

### MAIN SYMPTOMS OF TUBERCULOSIS

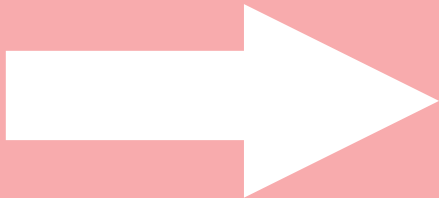
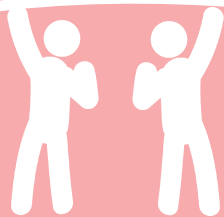
- ◆ Coughing, mostly with sputum;
- ◆ Raised body temperature;
- ◆ Weight loss;
- ◆ Night sweatiness.

IF THESE SYMPTOMS PERTAIN FOR MORE THAN TWO WEEKS, SEE A DOCTOR.



### THE RISK OF DEVELOPING TUBERCULOSIS IS HIGH:

- Due to close contact with a person having tuberculosis;
- Among persons infected with HIV;
- Among drug, tobacco and alcohol users;
- Persons with chronic diseases;
- Socially vulnerable people (e.g. internally displaced persons, migrants, persons living in the places of compact residence, homeless);
- Medical personnel working with persons having tuberculosis.



## TUBERCULOSIS IS NOT TRANSMITTED THROUGH:

- ◆ Household items (e.g. utensils, books, linen);
- ◆ Handshaking;
- ◆ Food products and by touching personal belongings of the person having tuberculosis.

## TREATMENT OF TUBERCULOSIS

- Tuberculosis treatment takes its time and requires timely initiation and compliance with treatment, but the disease is curable.
- You have to strictly follow your doctor's prescription and advice till the end of the full treatment course in order to avoid resistance to the medicine or a lethal outcome.



Let's unite to address the priority health needs of migrants, regardless of migration and legal statuses.

Be aware of your health status – take the TB and HIV tests.

Contribute and cooperate to prevent new TB and HIV infections!

Contribute and cooperate to fight TB- and HIV-related discrimination!

Contribute and cooperate to bring to zero TB- and AIDS-related deaths!

Universal access to TB and HIV prevention, care, treatment and support includes migrants and refugees living in our communities!



For further consultation, you may refer to the National Center for Disease Control and Public Health of Georgia via the toll-free hotline:

**116 001**

or send an e-mail to:

**pr.ncdc.ge**