

RETURN AND REINTEGRATION KEY HIGHLIGHTS

2022

EXECUTIVE SUMMARY



The opinions expressed in the report are those of the authors and do not necessarily reflect the views of the International Organization for Migration (IOM). The designations employed and the presentation of material throughout the report do not imply expression of any opinion whatsoever on the part of IOM concerning legal status of any country, territory, city or area, or of its authorities, or concerning its frontiers or boundaries.

IOM is committed to the principle that humane and orderly migration benefits migrants and society. As an intergovernmental organization, IOM acts with its partners in the international community to: assist in the meeting of operational challenges of migration; advance understanding of migration issues; encourage social and economic development through migration; and uphold the human dignity and well-being of migrants.

Editing and layout of this publication was supported with a financial contribution from the Government of Sweden as part of the project "From Policy to Practice: Operationalizing a Rights-based Approach to Return and Reintegration".

Publisher: International Organization for Migration
17 route des Morillons
P.O. Box 17
1211 Geneva 19
Switzerland
Tel.: +41 22 717 9111
Fax: +41 22 798 6150
Email: hq@iom.int
Website: www.iom.int

Cover photos: Paulo is an artist and restorer who spent the last 20 years in Europe before being assisted by IOM to voluntarily return to Brazil. © IOM 2022 / Beyond Borders Media

Required citation: International Organization for Migration (IOM), 2023. *Return and reintegration key highlights 2022. Executive Summary*. IOM, Geneva.

© IOM 2023



Some rights reserved. This work is made available under the [Creative Commons Attribution-NonCommercial-NoDerivs 3.0 IGO License](https://creativecommons.org/licenses/by-nc-nd/3.0/igo/legalcode) (CC BY-NC-ND 3.0 IGO).*

For further specifications please see the [Copyright and Terms of Use](#).

All rights reserved. No part of this publication may be reproduced, stored in a retrieval system, or transmitted in any form or by any means, electronic, mechanical, photocopying, recording, or otherwise without the prior written permission of the publisher.

Permissions: Requests for commercial use or further rights and licensing should be submitted to publications@iom.int.

* <https://creativecommons.org/licenses/by-nc-nd/3.0/igo/legalcode>.

RETURN AND REINTEGRATION
KEY HIGHLIGHTS
2022

EXECUTIVE SUMMARY

RETURN OVERVIEW



Passengers gaze out the window and take pictures as they fly over the Swiss Alps.
© IOM 2015/Muse MOHAMMED

| Return and reintegration |

This report presents data on two types of IOM assisted return programmes. First, assisted voluntary return and reintegration (AVRR) programmes, which aim to provide administrative, logistical and financial support to migrants who are unable or unwilling to remain in host/transit countries and who decide to return to their countries of origin. Second, voluntary humanitarian return (VHR), which is based on the AVRR approach, but applied in humanitarian settings. VHR often represents a life-saving measure for migrants who are stranded or in detention.

| Main trends 2022 |

In 2022, despite travel and immigration restrictions implemented in certain regions and countries in reaction to the COVID-19 pandemic, returns facilitated by IOM returned to pre-pandemic levels. **The number of AVRR beneficiaries assisted by IOM increased by 24 per cent**, from 43,428 in 2021 to 54,001 in 2022. Likewise, beneficiaries of **VHR assisted by IOM increased by 139 per cent**, from 6,367 in 2021 to 15,281 in 2022.

As in 2021, **West and Central Africa remained the main region of origin**, with 33,035 migrants assisted to return voluntarily in 2022, representing 47 per cent of the total caseload in 2022, and a 49 per cent increase from 2021. The **Middle East and North Africa** region overtook the European Economic Area (EEA) as **the main host region**, with 22,009 migrants assisted to voluntarily return in 2022, reflecting 32 per cent of the total number of migrants assisted to return in 2022, signifying an increase of 74 per cent compared to 2021. This can be explained in part by the 139 per cent increase in the number of humanitarian returns, facilitated by the lifesaving IOM voluntary humanitarian return programmes in Libya

and Yemen, in combination with the increasing numbers of other stakeholders providing return and reintegration assistance, particularly in the EEA.

In 2022, there was a 70 per cent rise in the number of migrants in **vulnerable situations** who were assisted to voluntarily return, from 4,446 in 2021 to 7,561 in 2022. This increase can be attributed, in part, to the overall growth in caseload during the same year, with migrants in vulnerable situations accounting for 10 per cent of the total caseload in 2022.

In 2022, 33 per cent of assisted voluntary return cases took place **within the same region**, and most of these movements (78%) **occurred in West and Central Africa**.

The Niger remained the main host country from which migrants were assisted to voluntarily return, with a total of 15,097 migrants – an increase of 42 per cent from 2021. **Libya was the second largest host country**, with a total of 11,200 migrants who were assisted to voluntarily return, representing an increase of 158 per cent from 2021.

In 2022, with 6,624 migrants assisted to voluntarily return, **Mali** was the main country of origin, signifying an increase of 48 per cent in returning migrants compared to 2021. Mali thus replaced **Guinea** as the main country of origin. Nonetheless, Guinea also experienced an increase in returning migrants (of 25%), with its 6,468 returns in 2022.

The number of host countries increased **from 125 in 2021 to 135 in 2022**. Similarly, the number of countries that were both host countries and countries of origin increased **from 120 in 2021 to 132 in 2022**. The number of countries of origin also saw an increase **from 150 in 2021 to 154 in 2022**.

| Breakdown of return type |

AVRR
54,001

Assisted voluntary return and reintegration

78%

69,282

Migrants assisted

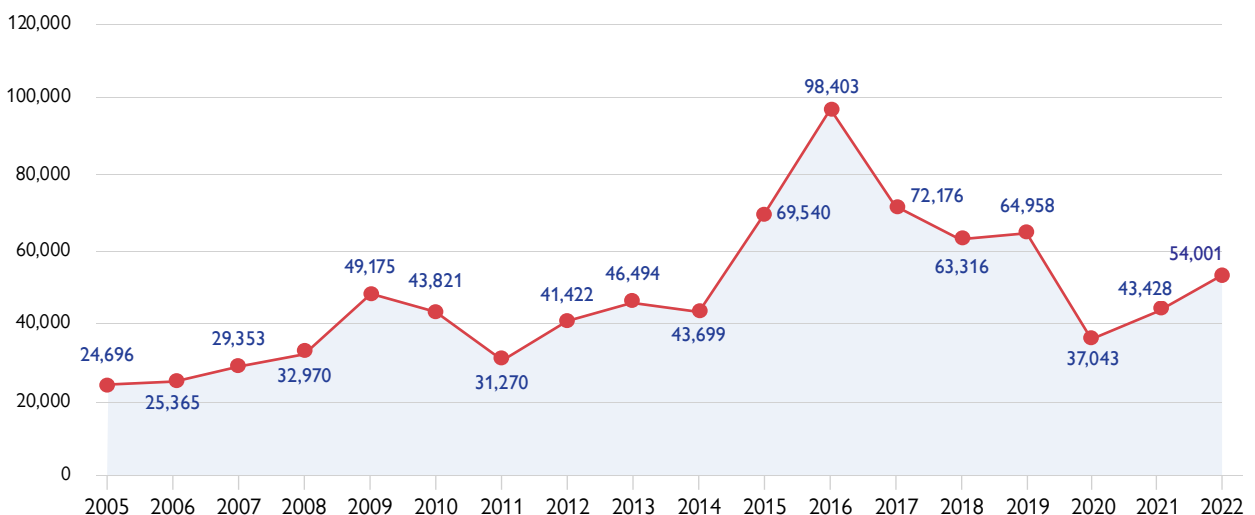
VHR
15,281

Voluntary humanitarian return

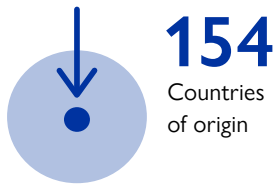
22%

Unless specified otherwise, the data presented in the following graphs include two types of assisted returns: AVRR and VHR.

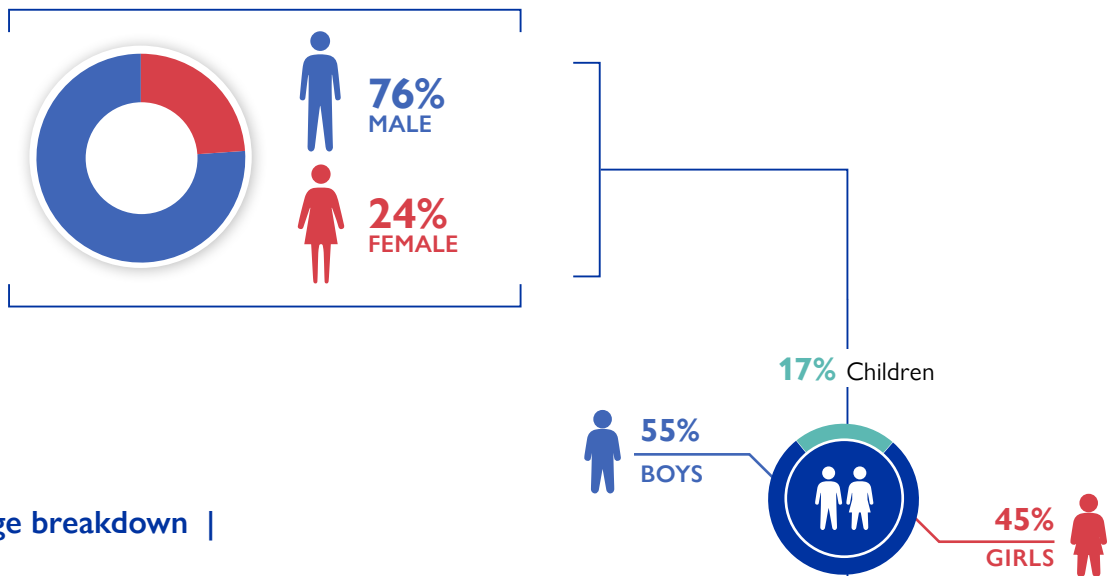
| Assisted voluntary return and reintegration beneficiaries, 2005–2022 |



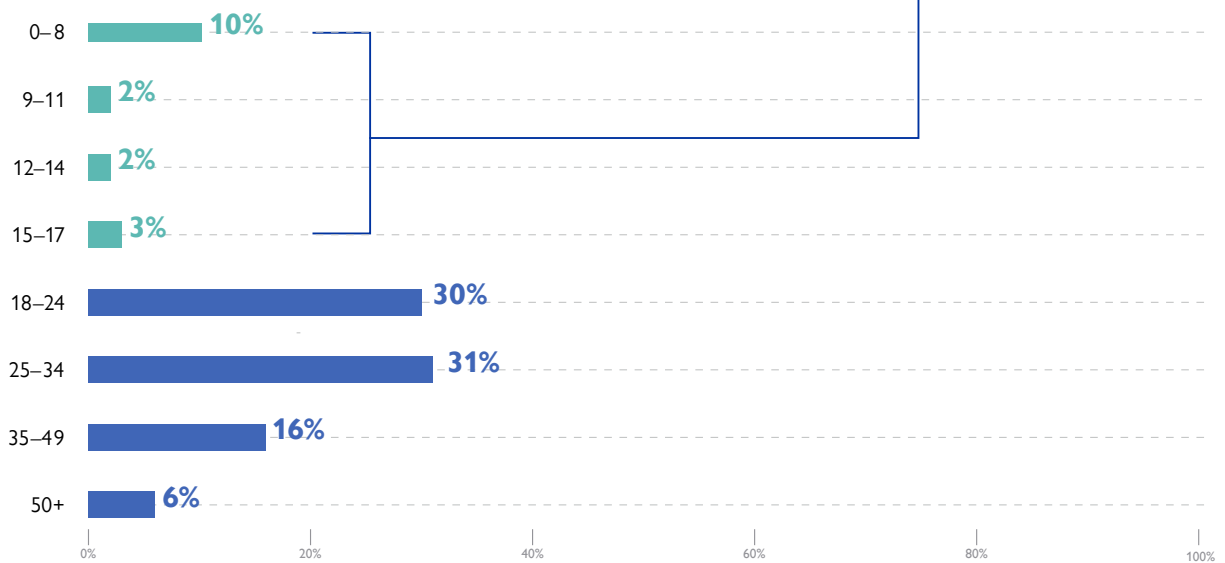
| Country overview |



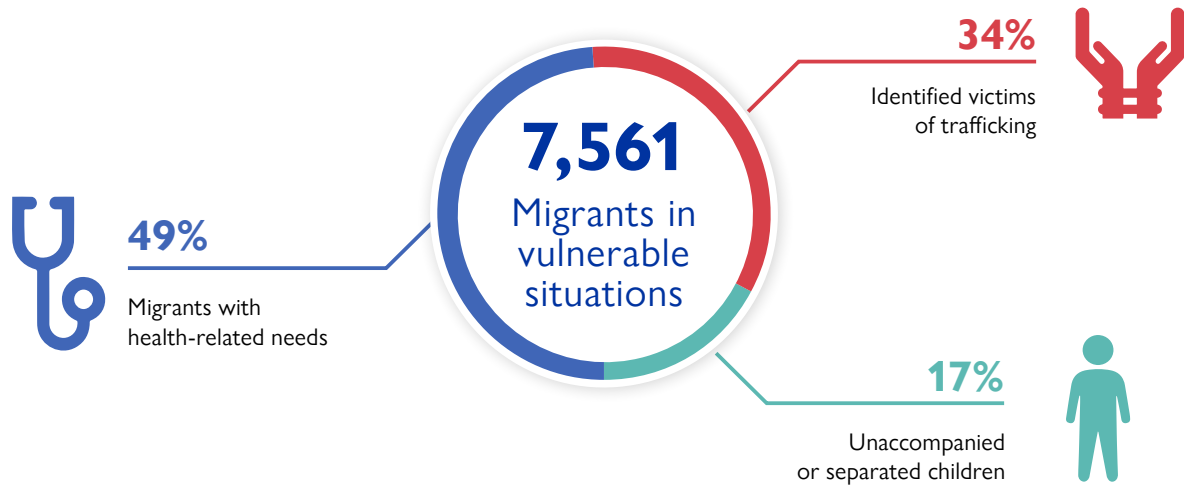
| Sex breakdown |



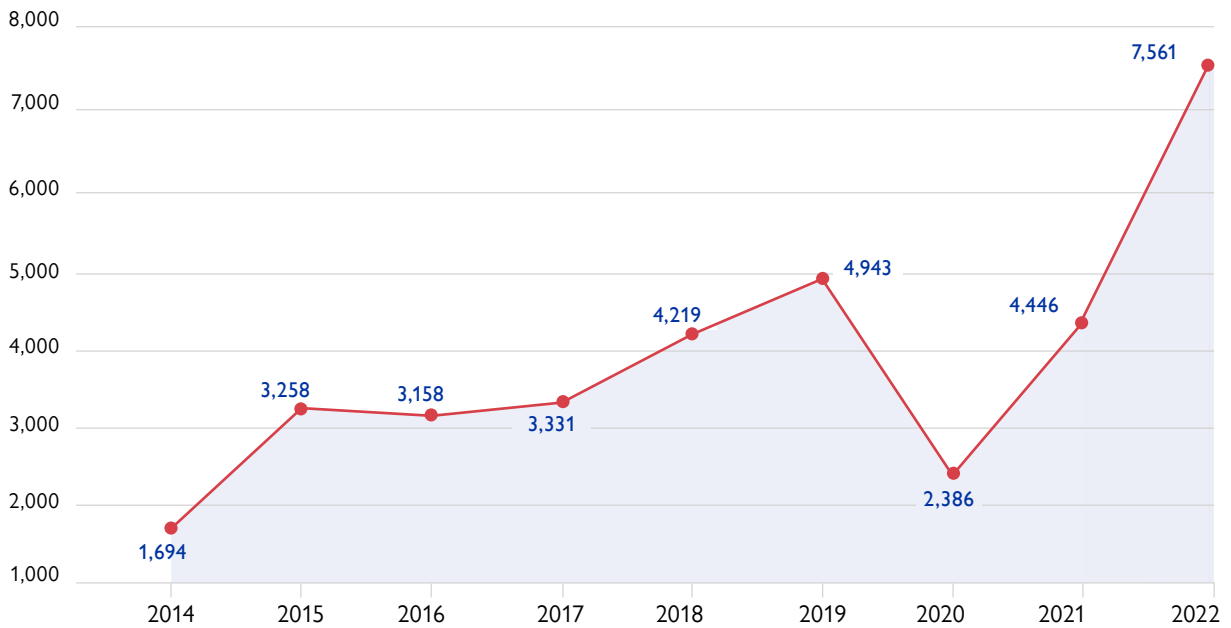
| Age breakdown |

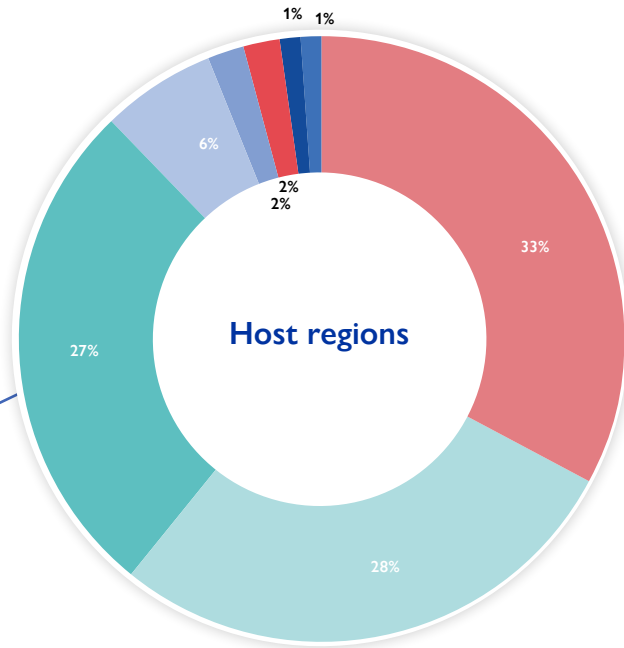


| Types of vulnerabilities |

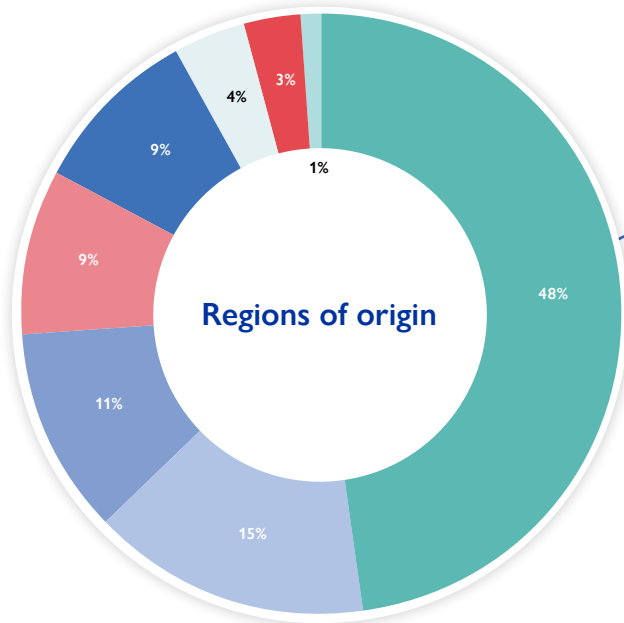


| Migrants in vulnerable situations assisted to return, 2014–2022 |





HOST REGIONS	Percentage	Region	Percentage	REGIONS OF ORIGIN
	1%	Asia and the Pacific	9%	
	2%	Central and North America and the Caribbean	3%	
	2%	East and Horn of Africa	11%	
	28%	European Economic Area	1%	
	33%	Middle East and North Africa	9%	
	0%	South America	4%	
	6%	South-Eastern Europe, Eastern Europe and Central Asia	15%	
	1%	Southern Africa	0%	
	27%	West and Central Africa	48%	



| Top 10 countries of origin and top 10 host countries |

MAIN COUNTRIES OF ORIGIN		
	Country	Number of beneficiaries
1	Mali	6 624
2	Guinea	6 468
3	Ethiopia	6 454
4	Nigeria	5 712
5	Georgia	2 944
6	Niger (the)	2 758
7	Sudan (the)	2 539
8	Côte d'Ivoire	2 333
9	Sierra Leone	2 249
10	Pakistan	1 920

MAIN HOST/TRANSIT COUNTRIES		
	Country	Number of beneficiaries
1	Niger (the)	15 097
2	Libya	11 200
3	Germany	7 874
4	Yemen	4 080
5	Greece	3 065
6	Morocco	2 457
7	Türkiye	2 242
8	Belgium	2 078
9	Tunisia	1 607
10	Netherlands (Kingdom of the)	1 473

REINTEGRATION OVERVIEW



Returning migrants in Côte d'Ivoire participate in a training with French photojournalist of Iranian origin Reza Deghati.
© IOM 2019/Mohamed Aly DIABATE

COUNTRIES/TERRITORIES OR AREAS IN WHICH REINTEGRATION ASSISTANCE WAS PROVIDED IN 2022

Afghanistan	Colombia	Indonesia
Albania	Comoros (the)	Iran (Islamic Republic of)
Algeria	Congo (the)	Iraq
Angola	Democratic Republic of the Congo (the)	Jamaica
Argentina	Costa Rica	Japan
Armenia	Côte d'Ivoire	Jordan
Australia	Cuba	Kazakhstan
Austria	Cyprus	Kenya
Azerbaijan	Czechia	Kyrgyzstan
Bangladesh	Dominican Republic	Lao People's Democratic Republic
Belarus	Ecuador	Latvia
Belgium	Egypt	Lebanon
Benin	El Salvador	Liberia
Bolivia, (Plurinational State of)	Eritrea	Libya
Bosnia and Herzegovina	Ethiopia	Lithuania
Brazil	Estonia	Luxembourg
Bulgaria	Finland	Madagascar
Burkina Faso	France	Malawi
Burundi	Fiji	Malaysia
Cabo Verde	Ghana	Mali
Cambodia	Greece	Mauritius
Cameroon	Guatemala	Mexico
Canada	Guinea	Mongolia
Chad	Guinea-Bissau	Montenegro
Chile	Haiti	Morocco
China	Honduras	Mozambique
Hong Kong SAR, China	Hungary	Myanmar
Taiwan Province of the People's Republic of China	Iceland	Nepal
	India	

Nigeria	Serbia	Uganda
North Macedonia	Sierra Leone	Ukraine
Netherlands (Kingdom of the)	Slovakia	United Kingdom of Great Britain and Northern Ireland (the)
Nicaragua	Somalia	United Republic of Tanzania (the)
Niger (the)	South Sudan	Uzbekistan
Peru	Spain	Venezuela (Bolivarian Republic of)
Philippines (the)	Sri Lanka	Viet Nam
Poland	Sudan (the)	Zambia
Portugal	Sweden	Zimbabwe
Republic of Korea (the)	Switzerland	Kosovo ¹
Republic of Moldova (the)	Tajikistan	Palestinian Territories
Romania	Thailand	
Russian Federation (the)	Togo	
Saudi Arabia	Trinidad and Tobago	
Senegal	Tunisia	
	Türkiye	

¹ References to Kosovo shall be understood to be in the context of United Nations Security Council resolution 1244 (1999).

| Main trends 2022 |

In 2022, **131 IOM offices** were involved in reintegration-related activities either prior to return in the host country or upon arrival in the country of origin.

The total number of reintegration services increased by 50 per cent, from 113,331 in 2021 to 170,714 in 2022. Services, which include reintegration counselling (27%), economic assistance (42%), social support (13%), psychosocial support (14%) as well as assistance categorized as others (4%), were provided at the **individual (79%), collective (13%) and community (8%) level.**

Furthermore, **96 per cent of services were provided by IOM and 4 per cent through referrals.** The reintegration services were delivered to migrants whose return was organised by IOM (76%), supported through assisted-return programmes by governments or other actors (10%) or (14%) were government enforced returns.

Following the trend from 2021, most of the global **pre-departure** services were provided by country offices in the **European Economic Area.** In contrast to 2021, the number of pre-departure services saw a **60 per cent** decrease of reintegration activities, from 26,689 in 2021 to 11,458 in 2022.

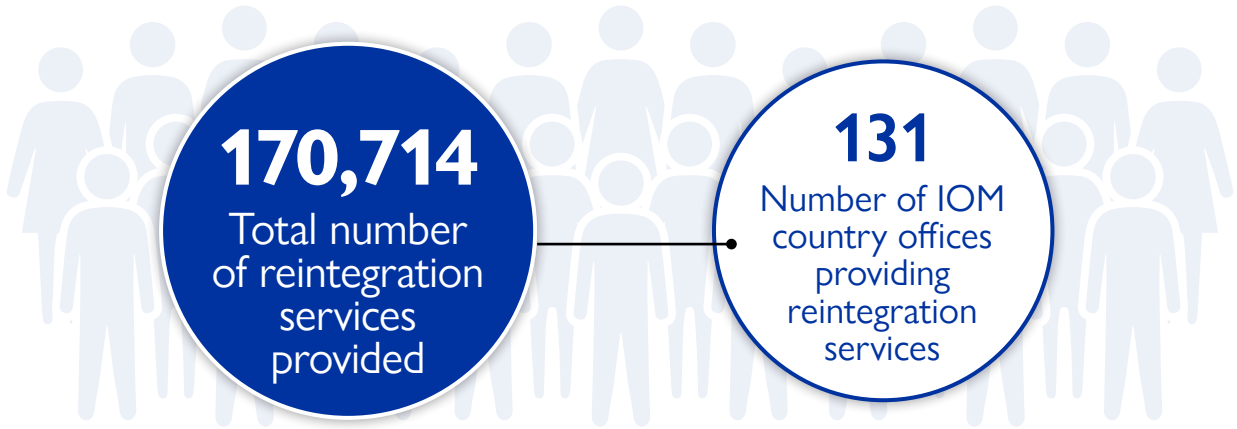
The number of post-arrival services increased by **88 per cent**, from 86,644 in 2021 to 159,256 in 2022. The **majority of post-arrival reintegration services (55%) were provided by country offices in West and Central Africa**, the main region of origin.

The top three countries for the provision of reintegration assistance in 2022 at the **pre-departure** phase were Switzerland (46%), Türkiye (16%) and Germany (10%). The top three countries for the provision of reintegration assistance at **post-arrival phase** were Mali (16%), Nigeria (10%) and El Salvador (8%).

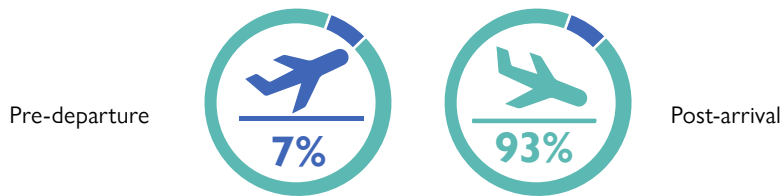
| Provision of reintegration assistance |

IOM adopts an integrated approach to reintegration assistance, addressing migrants' economic, social and psychosocial needs, whether at the individual level, as part of their communities or within the overall structures of States. Please refer to the [Reintegration Handbook](#) for information on the integrated IOM approach to reintegration.

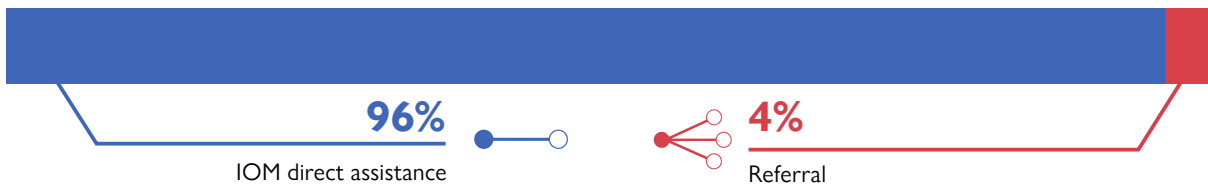
The categories of reintegration support presented in the following graphs reflect the total number of services provided. The categories are not mutually exclusive: beneficiaries of IOM reintegration assistance can receive multiple types of support at different levels and return stages (such as pre-departure counselling in the host country and economic assistance in the country of origin).



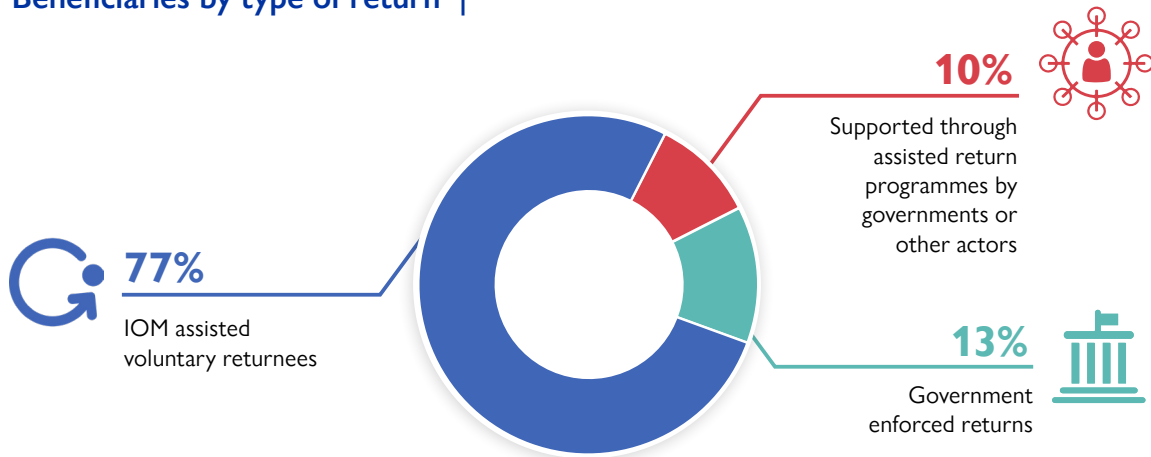
| Pre-departure or post-arrival assistance provided |



| Reintegration assistance directly provided by IOM or through referral |

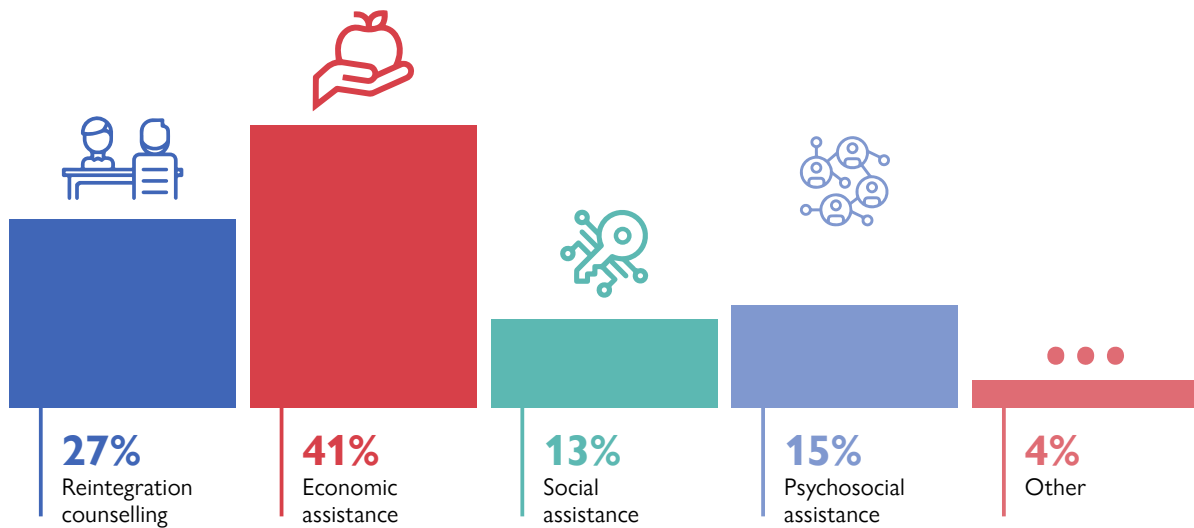


| Beneficiaries by type of return |



| Level of assistance |²

| Types of services provided |



² The individual level of assistance addresses the specific needs and vulnerabilities of returnees and returning family members. The collective level of assistance targets interventions at the group level and is tailored to the specific needs and vulnerabilities of returnees and returning family members. The community level encompasses assistance that responds to the needs, vulnerabilities and concerns of communities to which migrants return, including returnee family and non-migrant population. For more information on reintegration assistance, please consult the [Reintegration Handbook](#).

| Reintegration assistance in host countries |

11,458

Services provided

52

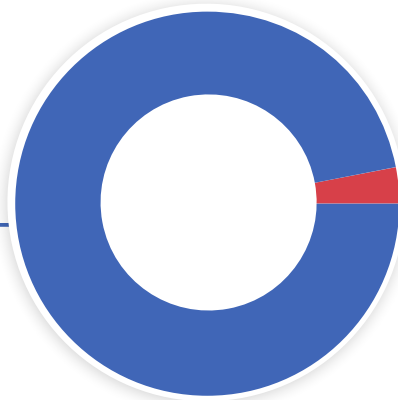
Number of IOM country offices in host countries providing reintegration assistance

| Beneficiaries by type of return |



97%

IOM assisted voluntary returnees



3%



Supported through assisted return programmes by governments or other actors

Reintegration assistance directly provided by IOM or through referral in host countries



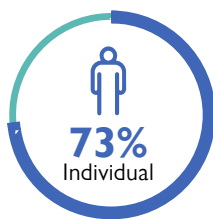
98%

IOM direct assistance

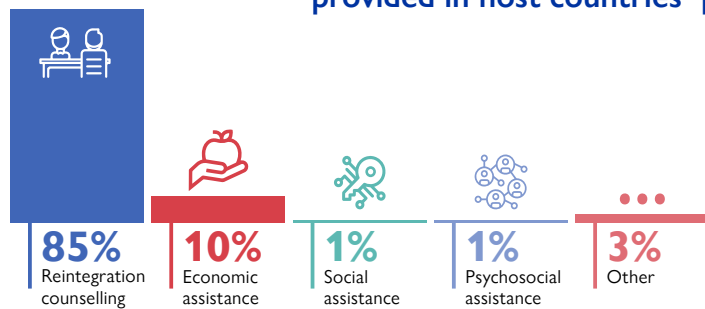
2%

Referral

| Levels of assistance |



| Types of reintegration assistance provided in host countries |



Top 5 host countries for pre-departure reintegration assistance

1°	Switzerland	5 306
2°	Türkiye	1 942
3°	Germany	1 239
4°	Belgium	1 060
5°	Serbia	262

Number of services provided

| Reintegration assistance in countries of origin |

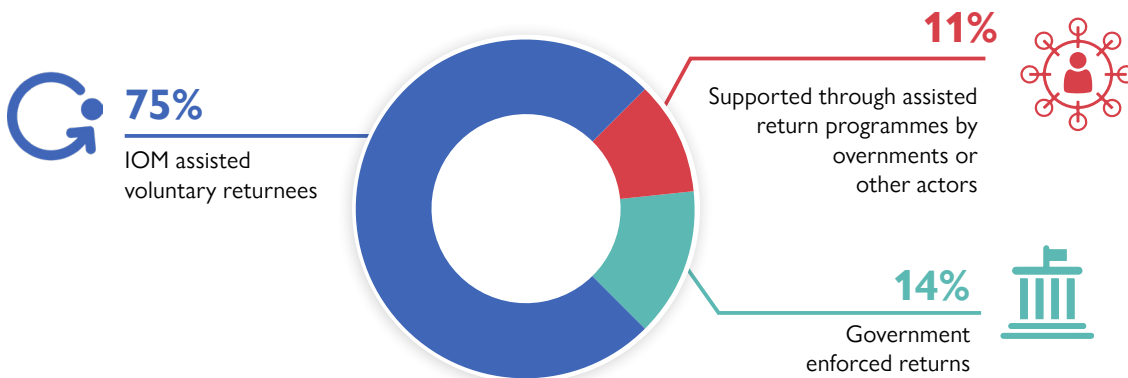
159,256

Services provided

116

Number of IOM country offices in countries of origin providing reintegration assistance

| Beneficiaries by type of return |



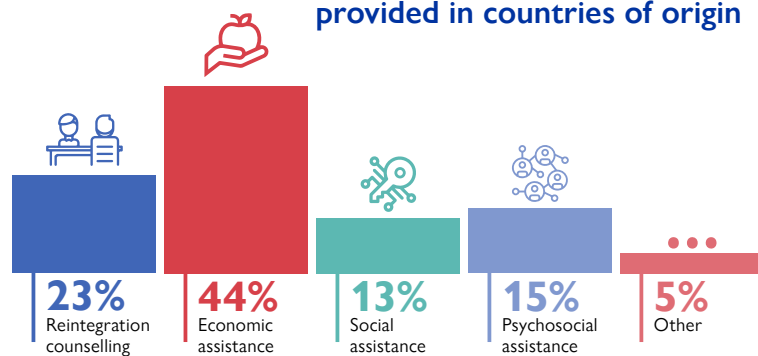
Reintegration assistance directly provided by IOM or through referral in countries of origin



| Levels of assistance |



| Types of reintegration assistance provided in countries of origin |



Top 5 host countries for pre-departure reintegration assistance

Rank	Country	Number of services provided
1°	Mali	26 301
2°	Nigeria	17 251
3°	El Salvador	13 279
4°	Guatemala	11 507
5°	Guinea	9 028



International Organization for Migration
17 route des Morillons, P.O. Box 17, 1211 Geneva 19, Switzerland
Tel.: +41 22 717 9111 Fax: +41 22 798 6150
Email: hq@iom.int Website: www.iom.int